

Farm and Petting Zoo Field Trip Health and Safety Tips

A trip to the petting zoo or the farm can contribute to the education and development of children. It is a great way for the children to learn about the behavior of animals. Teachers and parents must be aware, however, that animals can be carriers of a variety of diseases that can make humans ill. Taking proper precautions will make the trip to the zoo or farm more enjoyable and educational.

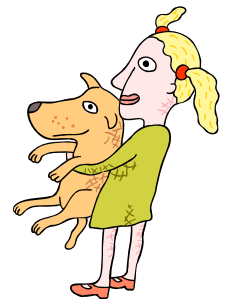
It is suggested that you discuss with your children and students, necessary precautions to take before you visit the petting zoo or open farms to minimize any potential risk of contracting diseases from animals.

Children and students must:

- *Not chew gum* in the vicinity of animal areas.
- *Wear appropriate clothing*, including sturdy outdoor shoes or boots if possible (no sandals).
- Inform teachers or parents of *cuts or scrapes* on their hands or faces. These must be covered with a waterproof dressing or bandage prior to entering the zoo or farm.

During and after a visit to the zoo, teachers and parents must make sure that the children:

- Do not kiss the animals.
- Always wash their hands thoroughly before eating, after any contact with animals and again before leaving the zoo or farm.
- Eat only in designated areas.
- Do not eat food which has fallen to the ground.
- Do not suck their fingers or put hands, pens, pencils or crayons etc. in their mouths.
- Do not taste animal foods.
- Clean or change their footwear before leaving, remembering to wash their hands after any contact with animal manure on their footwear.
- Do not use or pick up tools (e.g. spades) unless permitted to do so by staff.
- Approach and handle animals quietly and gently.
- Do not chase, frighten or torment the animals.
- Do not climb animal enclosures.



**Do not chase,
frighten or torment
the animals**

Staff/volunteers must report all animal bites or scratches, or other injuries resulting from animal contact to your health region.

If a member of your group shows signs of illness (e.g. diarrhea) after a visit, advise them or their parents to visit the doctor and explain that they have had recent contact with animals. Notify your nearest Environmental Public Health Services office.

Make sure all children wash their hands after leaving the petting zoo or farm, and before they eat.

Information adopted from HSE, UK. Compiled by:

- Capital Health
- Aspen Regional Health
- East Central Health

For more information, please contact your nearest Environmental Public Health Services office.

Edmonton Main Office
Capital Health Centre - South Tower
Strathcona

(780) 413-7928
(780) 735-1400
(780) 467-5571

Spruce Grove
Leduc
St. Albert

(780) 962-7509
(780) 980-4644
(780) 459-6671

EPHR-01-003
Created: May/01
Revised: Jul/06
Updated: Jun/08